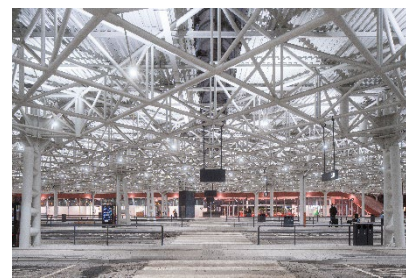
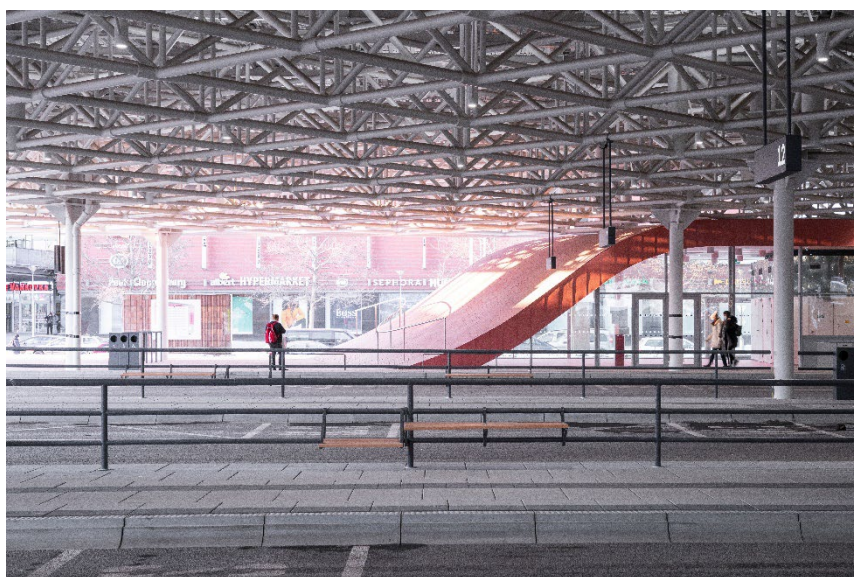


Contract name:	<b>ZVONAŘKA CENTRAL BUS STATION</b>
Location:	Brno
Investor:	ČSAD Brno Holding a.s.
Architect:	Chybik + Kristof Architects & Urban Designers
General contractor:	PS Brno, s.r.o.
Type of construction:	Public building
Construction period:	2020–2021
Project range:	10 000 m <sup>2</sup>

**Description:** The Zvonařka Central Bus Station is the main hub for out-of-town bus transport in Brno, with up to 25,000 visitors and 820 connections per day. The station was built between 1977 and 1988 in a brutalist style with a massive structure supporting a reinforced concrete slab. No major alterations were made until 2020 and its appearance made it considered the most shameful part of Brno. It was not until 2020 that its reconstruction was initiated by the authors themselves. A new glass-enclosed check-in hall with sanitary facilities, information, waiting room and bistro was created. **In order to visually enlarge and illuminate the structure, it was painted with a bright reflective colour and the roof was fitted with 400 LED lights that point not only downwards but also upwards into the space.** The roof has also been renovated and serves not only as a parking lot for buses, but also as a parking lot for 53 vehicles.

**Technical description:** Our company designed the Helvar DIGIDIM and IMAGINE lighting control system for this large-scale building, which requires an efficient and economical lighting control solution. The system included DIGIDIM routers and energy monitoring for 8 groups including a scheduler with calendar for 8 scenes. We are proud that our system guarantees the lighting of such an important and busy building, not only in terms of efficiency and wellbeing, but also in terms of economic savings.



Detailed technical description of the IMAGINE system:

The IMAGINE system provides the ultimate flexibility ranging from energy efficient commercial lighting to state-of-the-art architectural lighting applications. It provides comprehensive fully scalable and flexible lighting control with **endless user interface possibilities – offering automation, chromaticity and color temperature control, hundreds of lighting scenes and transitions**, all in a cutting-edge design in line with modern concepts such as wellbeing, tunable white and Human Centric Lighting. **For efficiency and energy savings, it offers integration with building systems, instant energy monitoring, easy installation and sustainability**. Last but not least, its advantage is its **expandability**, which allows projects such as offices, schools, universities, hospitals or other buildings requiring complex solutions to be built or renovated in stages.

**The main advantages of the IMAGE system are:**

- Comprehensive DALI and DALI2 lighting control
- Fully scalable and flexible solution
- Control from a single room to building complexes
- Automation and wellbeing support
- Chromaticity and colour temperature control
- Endless user interface possibilities
- Hundreds of lighting scenes and transitions
- Integration with building systems
- Instantaneous energy consumption monitoring
- Easy installation and more

